



Dear Clients,

Welcome to Spring! OMNI & TSACG are pleased to provide your organization with its Report Card detailing your 2022 1st quarter plan administration activity. This report card provides you with a breadth of information so that you may gauge the health and success of your plan. OMNI/TSA is diligently working with all service providers to begin giving us plan asset information or to provide this information more frequently. This project will not only allow you to have a more accurate picture of the assets in your plan, but will make our processes more efficient and provide your employees with a quicker turnaround on Salary Reduction Agreements and transaction approvals. If you have any questions on the report card or anything 403(b)/457(b) related, please reach out to your Client Relations Manager.

Sincerely,

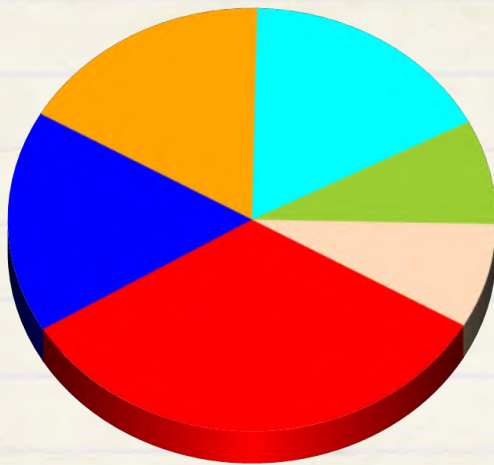
*Sarah Breiner*

Sarah Breiner, Managing Director & General Counsel

**Total Contributing Participants**

**12**

**Participation by Service Provider**



■ National Life - 33%    ■ Great American - 17%  
■ American Funds - 17%    ■ Vanguard Fiduc - 8%  
■ Horace Mann Li - 17%    ■ Athene Annuity - 8%

**\* Contributions Remitted to Service Providers This Quarter**

<b>National Life Group</b>	<b>\$9,144.00</b>
<b>American Funds Service</b>	<b>\$900.00</b>
<b>Horace Mann Life</b>	<b>\$675.00</b>
<b>Great American Insurance</b>	<b>\$1,950.00</b>
<b>Vanguard Fiduciary</b>	<b>\$5,328.00</b>

**Total Plan Assets**

**\$2,133,307.74**

**\*Total Plan Assets by Reporting Service Provider**

<b>National Life Group</b>	<b>\$826,381.76</b>
<b>American Funds Service</b>	<b>Not Reporting</b>
<b>Horace Mann Life</b>	<b>\$72,444.81</b>
<b>Great American Insurance</b>	<b>\$1,045,775.94</b>
<b>Vanguard Fiduciary</b>	<b>\$119,537.80</b>

**Salary Reduction Agreements Processed**

This Quarter	Last 12 Months
<b>2</b>	<b>7</b>

**New Accounts Opened**

This Quarter	Last 12 Months
<b>1</b>	<b>1</b>

**Transactions Processed - Last 12 Months**

Distributions	<b>64</b>
Loans	<b>3</b>
Hardships	<b>1</b>
Exchanges/Transfers	<b>4</b>
QDRO's	<b>0</b>
<b>TOTAL</b>	<b>9</b>

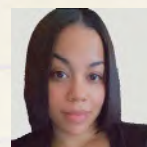
**Payroll Schedules on Record**

Representation of future payroll dates on file with OMNI.



**Dedicated Specialists**

**Jamila McDuffie**  
Client Relations Manager  
Ext. 106



**Ruben Laza**  
Remittance Specialist  
Ext. 152

\* Plan asset and remittance information is provided for the five most utilized service providers. Asset information originates from industry standard SPARK file transmission. The frequency of SPARK data transmission varies and some providers do not utilize SPARK data. Accordingly, this data is intended for general guidance.